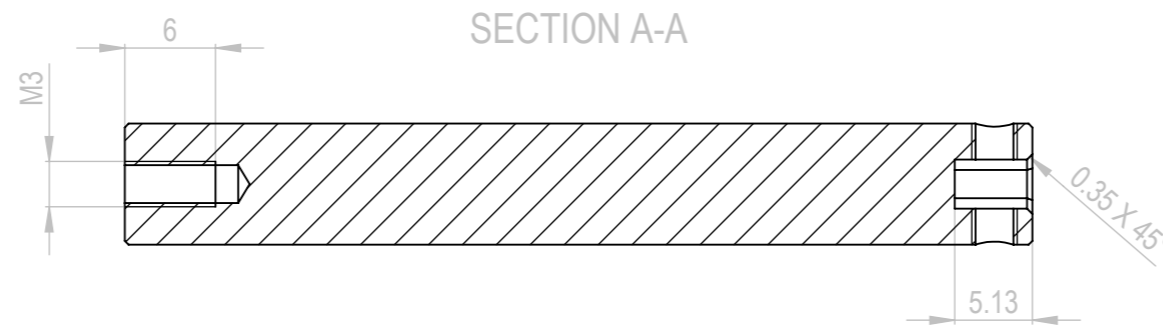
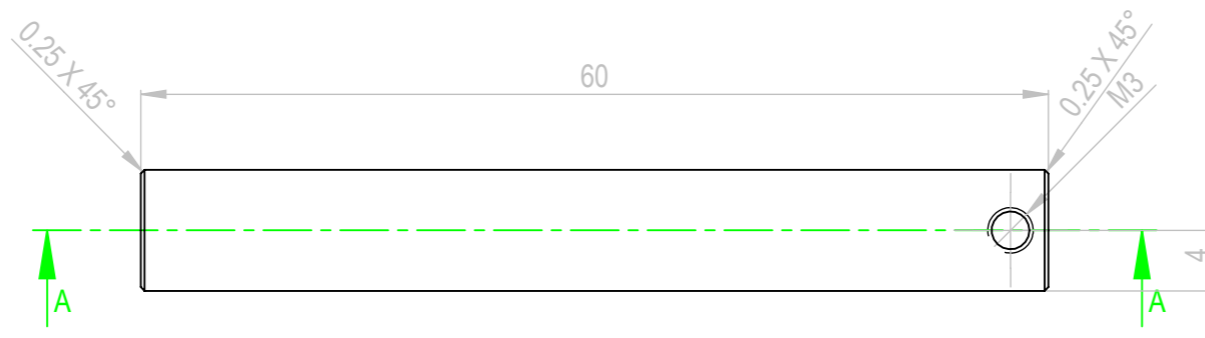
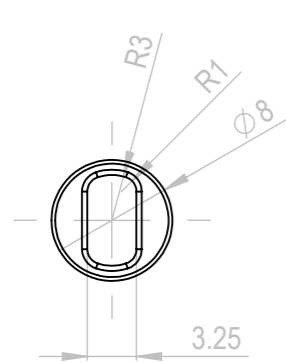
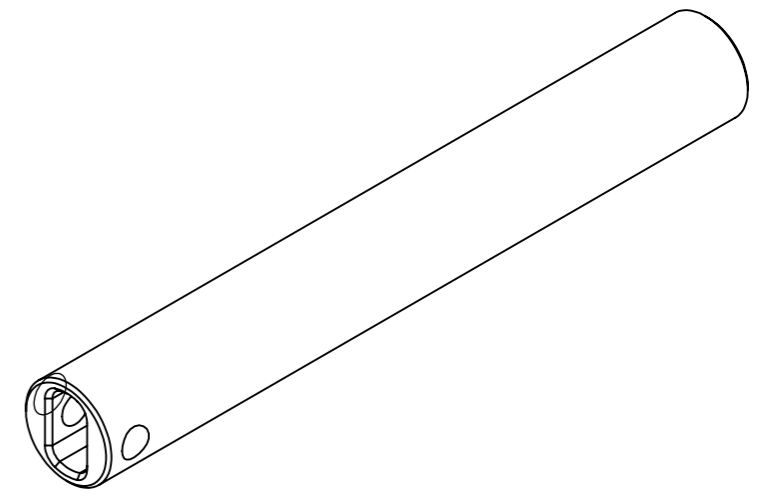


NEXT HIGHER ASSY:

ASSOCIATED FILES:



NOTES:

1. MATERIAL: ALUMINIUM 6082,
2. MATERIAL CERTIFICATION REQUIRED
3. FINISH: NATURAL ANODISE,
4. BREAK (0.1~0.2) SHARP EDGES & RADIUS
5. REMOVE ALL BURRS
6. FIRST ARTICAL INSPECTION REPORT ON ALL DIMENSIONS
7. GENERAL OVER CHAMFER 0.25mmX0.25mm
8. QTY PER UNIT: 2



CONFIDENTIAL:
All rights reserved.
Communications or
reproduction without written
approval from FlightScope
(Pty.) Ltd. forbidden.

MATERIAL:

TEXTURE:
FINISH:
WEIGHT(g):

TOLERANCE

UNLESS OTHERWISE SPECIFIED
DIMENSIONS ARE IN MILLIMETERS
LINEAR
0 = ±0.5
0.0 = ±0.25
0.00 = ±0.15
0.000 = ±0.015

SURFACE =
S/METAL BEND <= ±0.2°
MACHINED ANGLE <= ±0.2°

DESCRIPTION

E47-GP331-A

PRT. NO
FS Xi FOOT DRIVE
SHAFT

FIRST ANGLE
PROJ.



DO NOT SCALE DRAWING

SCALE
2:1

SHEET
1 OF 1

PAPER SIZE
A3

OFFICIAL RELEASE

17/09/2013

HB

TJ

HB

DETAIL

DATE

DRW

CH'CKD

ENG